



**TEATR LALKI, MASKI I AKTORA GROTESKA**

**ul. SKARBOWA 2**

**31 – 121 KRAKÓW**

**TEL. 12 633 48 22**

**[groteska@groteska.pl](mailto:groteska@groteska.pl)**

**[www.groteska.pl](http://www.groteska.pl)**

## **Technical data**

**The Groteska Theatre - Main Stage**

**Update 16.01.2012**

**Stage location:** 1 floor

**Auditorium:** 276 seats, additional seats: 18

**Stage area:** 70m<sup>2</sup>

**Proscenium opening:** height 4.10m, width 5.94m

**Stage depth from the proscenium:** 10.42m

**Stage height from the floor to the upper limit of pipes:** 9.20m

**Drapes:** black

**Floor:** black, textile BT

**Ballet Floor:** black/grey 60m<sup>2</sup> [6m x 10m]

**Drop:** black/white

**Dimentional limitations for stage design components**

- 1- door 2 m x 2 m
- 2- door 1 m x 2.7 m
- 3- component lenght to 4.3 m

**Ladies dressing room:** 30m<sup>2</sup>

**Gentlemen dressing room:** 44m<sup>2</sup>

**Air condition:** no

**Disabled access:** no

**Car park:** no

**Eating place - cafe-**100m<sup>2</sup>

[on the ground floor, receptions possible ]

**Costume rental:** no

**Passenger lift:** no

**Service lift:** no





**TEATR LALKI, MASKI I AKTORA GROTESKA**

ul. SKARBOWA 2

31 – 121 KRAKÓW

TEL. 12 633 48 22

[groteska@groteska.pl](mailto:groteska@groteska.pl)

[www.groteska.pl](http://www.groteska.pl)

**THE MAIN STAGE - SOUND EQUIPMENT**

EQUIPMENT - TYPE	NUMBER OF PIECES	NOTES
<b>SOUND SYSTEM</b>		
ALLEN HEATH GL 2800	1	
Q4 AUDIO DPI 20	3	FRONT
EAW AX 396	4	FRONT
EAW AX 112	2	FRONT
DBX DRIVE RACK 260	1	FRONT
PAGING CHANNELS	4	
ZECK (200W)	2	PROSCENIUM (MOBILE)
DYNACORD (200W)	2	BACK OF STAGE (PERMANENT)
ACTIVE COLUMN LOUDSPEAKERS ZECK VECTOR T3A	2	
LEXICON ALEX	1	
DIGITECH 5200	1	
TAPCO SQ2	1	2 CHANNEL COMPRESSOR LIMITER
DI BOX (2XDOD, 2X TAPCO)	4	PASSIVE CONSTANS
KLAR TEKNIK SQ 1	1	8-CH, COMPRESSOR
<b>SOUND PLAYBACK</b>		
MINIDISC SONY MOS – JE 520	2	
MINIDISC/CD TASCAM CD1 MK II	1	
CD DENON DN-C635	1	
<b>MICROPHONES</b>		
SHURE SM-58	5	
RDUCH	2	CONDENSER TYPE
SM 57	2	DYNAMIC
RODE M1	1	DYNAMIC
RODE NT 5	1 PAIR	CONDENSER TYPE
RDUCH	1	ABOVE THE STAGE



**TEATR LALKI, MASKI I AKTORA GROTESKA**

ul. SKARBOWA 2

31 – 121 KRAKÓW

TEL. 12 633 48 22

[groteska@groteska.pl](mailto:groteska@groteska.pl)

[www.groteska.pl](http://www.groteska.pl)

		CONDENSER TYPE CONSTANS
AUDIOTECHNICA AEW T5400	6	WIRELESS
AUDIOTECHNICA AEW T1000	8	MICROPORT
<b>STANDS</b>	7	
<b>NOTE STANDS</b>	6	

**MULTIMEDIA**

PANASONIC PT-D5500 PROJECTOR	3	THE MULTIMEDIA EQUIPMENT MAY BE USED UPON CONSENT OF THE THEATRE MANAGEMENT
PLC-XF-47 SANYO PROJECTOR	1	
OBJECTIVE LNS-SO2Z SANYO	1	
OBJECTIVE LNS-W03 SANYO	1	
OBJECTIVE LNS-W02Z SANYO	1	
OBJECTIVE XGA (0,8)	3	
OBJECTIVE XGA (1,8 – 2,5)	3	
EDIROL V4 VIDEO MIXER	3	
DVD PIONEER	4	
MEDIAMASTER PR - ArKaos	1	
LOOPS + HEADPHONES	20	

**THE MAIN STAGE - LIGHTING**

EQUIPMENT - TYPE	NUMBER OF PIECES	NOTES
MAC TW1 WASH	4	
WARP 800W	5	
ADB 1200 PROFIL	4	
RBV 1000 W	12	
RBV 1200 W	2	
RBV PC 1000W	6	
ADB 500 W PC	20	
RVB 650W PC	8	
PAR 64 1000 W	10	COUNTERS
PACIFIC 1200 LUNA	4	



**TEATR LALKI, MASKI I AKTORA GROTESKA**

**ul. SKARBOWA 2**

**31 – 121 KRAKÓW**

**TEL. 12 633 48 22**

**[groteska@groteska.pl](mailto:groteska@groteska.pl)**

**[www.groteska.pl](http://www.groteska.pl)**

PAR LED 300W	10	
FLOOD LIGHTS 500 W	8	
FLOOD LIGHTS 1000 W	12	HORIZONTAL
COEMAR STAGELITE LED	8	HORIZONTAL
SPARK 4D MIXER TABLE	1	TOTAL 120 ANALOGUE CIRQUITS
LCS 420 MIXER TABLE	1	
MAGIC Q MQ 100 PRO MIXER TABLE	1	
EXTRA PART FOR MAGIC Q PLAYBACK WING MIXER TABLE	1	
THEATRE SMOKE MACHINE	1	



**TEATR LALKI, MASKI I AKTORA GROTESKA**

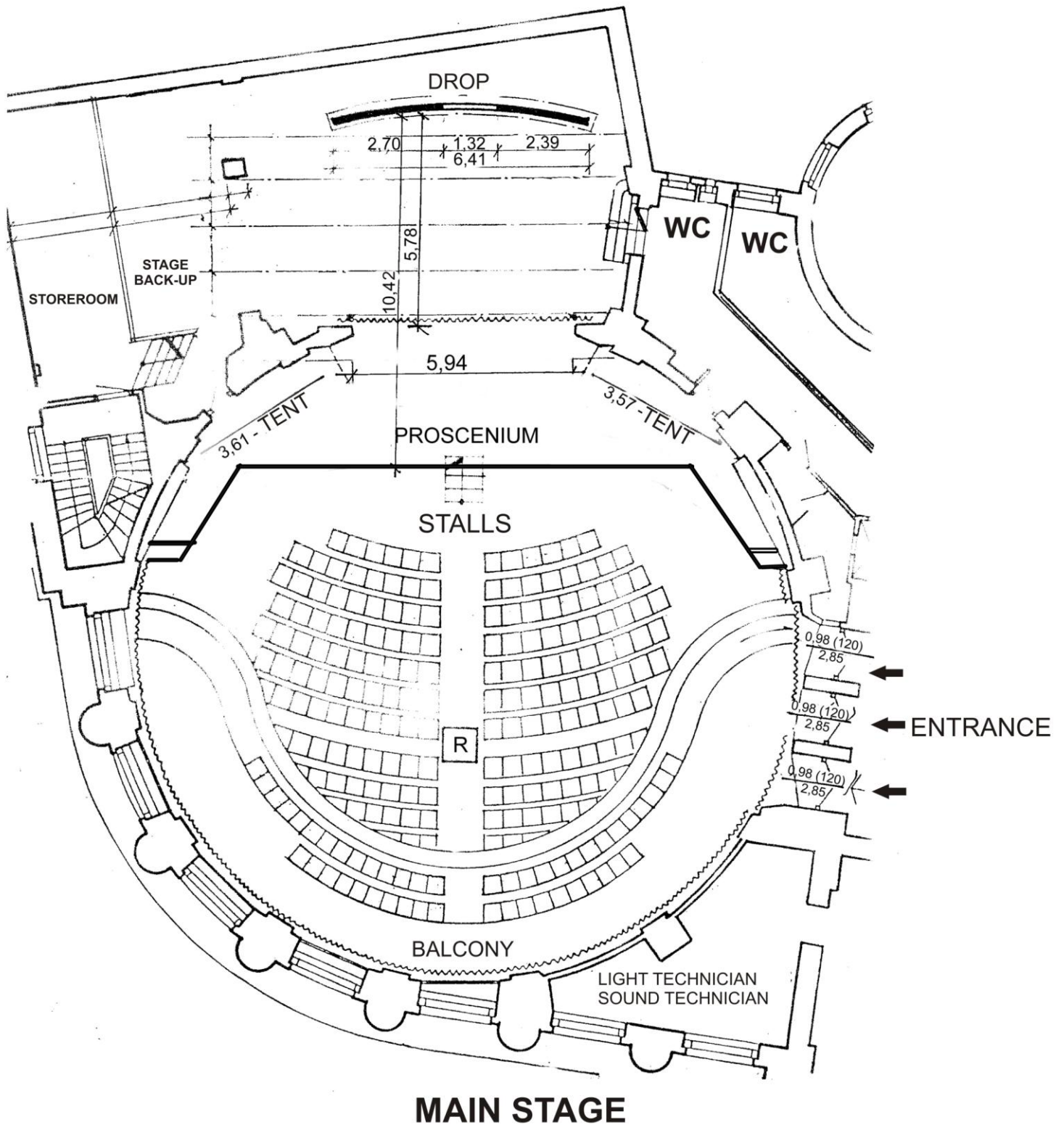
**ul. SKARBOWA 2**

**31 - 121 KRAKÓW**

**TEL. 12 633 48 22**

**[groteska@groteska.pl](mailto:groteska@groteska.pl)**

**[www.groteska.pl](http://www.groteska.pl)**





**TEATR LALKI, MASKI I AKTORA GROTESKA**

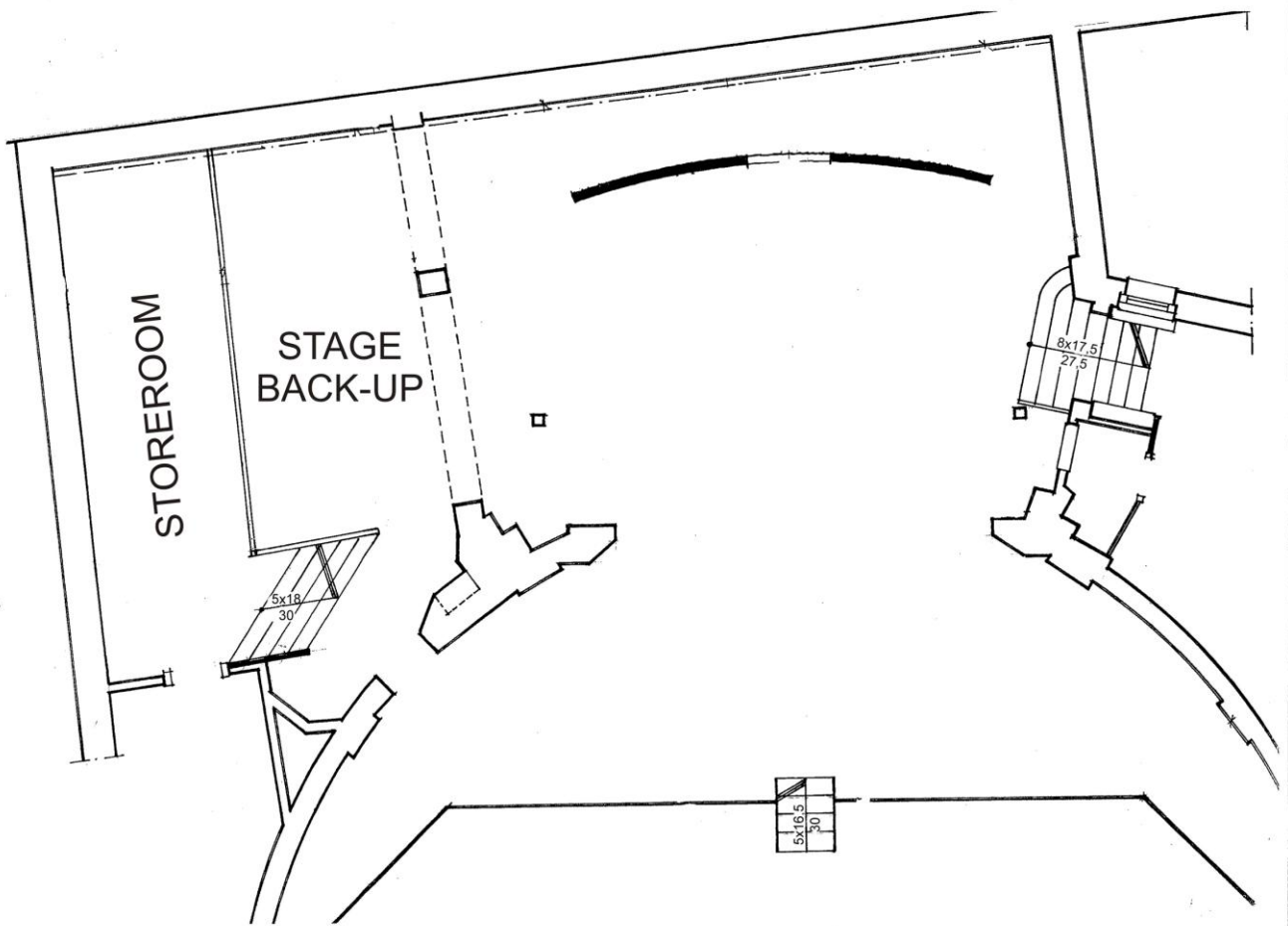
**ul. SKARBOWA 2**

**31 - 121 KRAKÓW**

**TEL. 12 633 48 22**

**groteska@groteska.pl**

**www.groteska.pl**



**MAIN STAGE - HORIZONTAL PROJECTION**



**TEATR LALKI, MASKI I AKTORA GROTESKA**

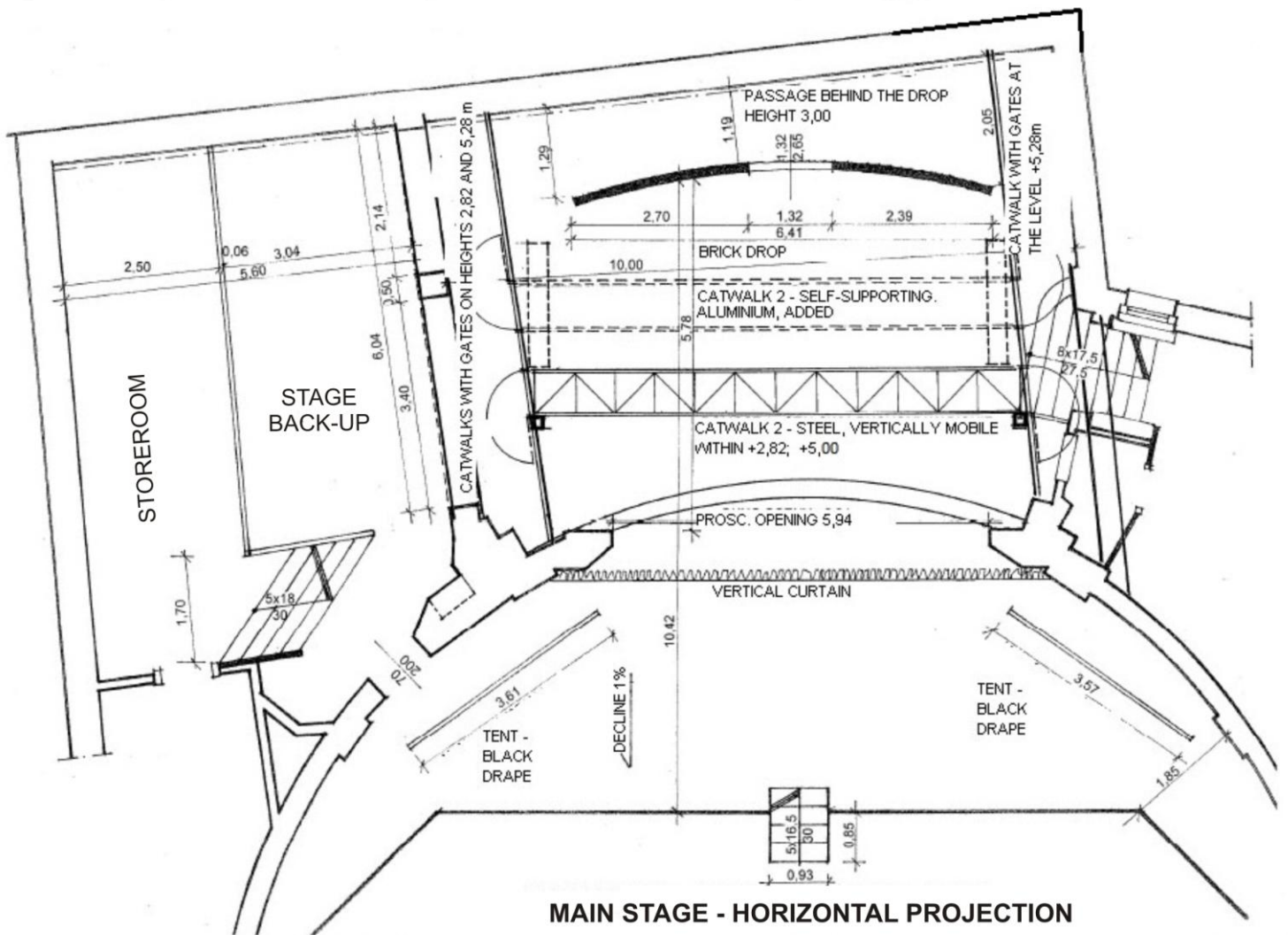
ul. SKARBOWA 2

31 - 121 KRAKÓW

TEL. 12 633 48 22

[groteska@groteska.pl](mailto:groteska@groteska.pl)

[www.groteska.pl](http://www.groteska.pl)



**MAIN STAGE - HORIZONTAL PROJECTION**



**TEATR LALKI, MASKI I AKTORA GROTESKA**

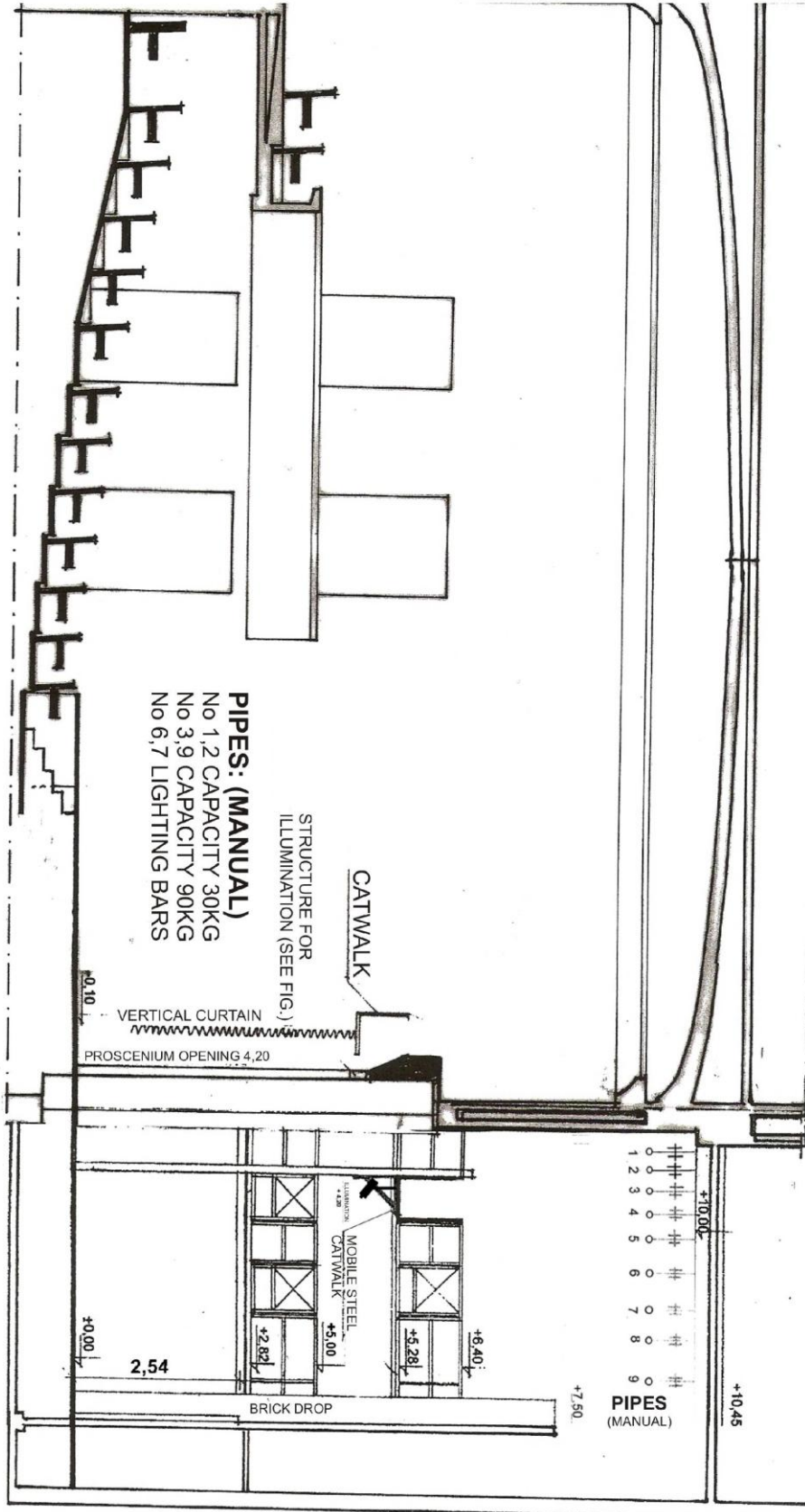
ul. SKARBOWA 2

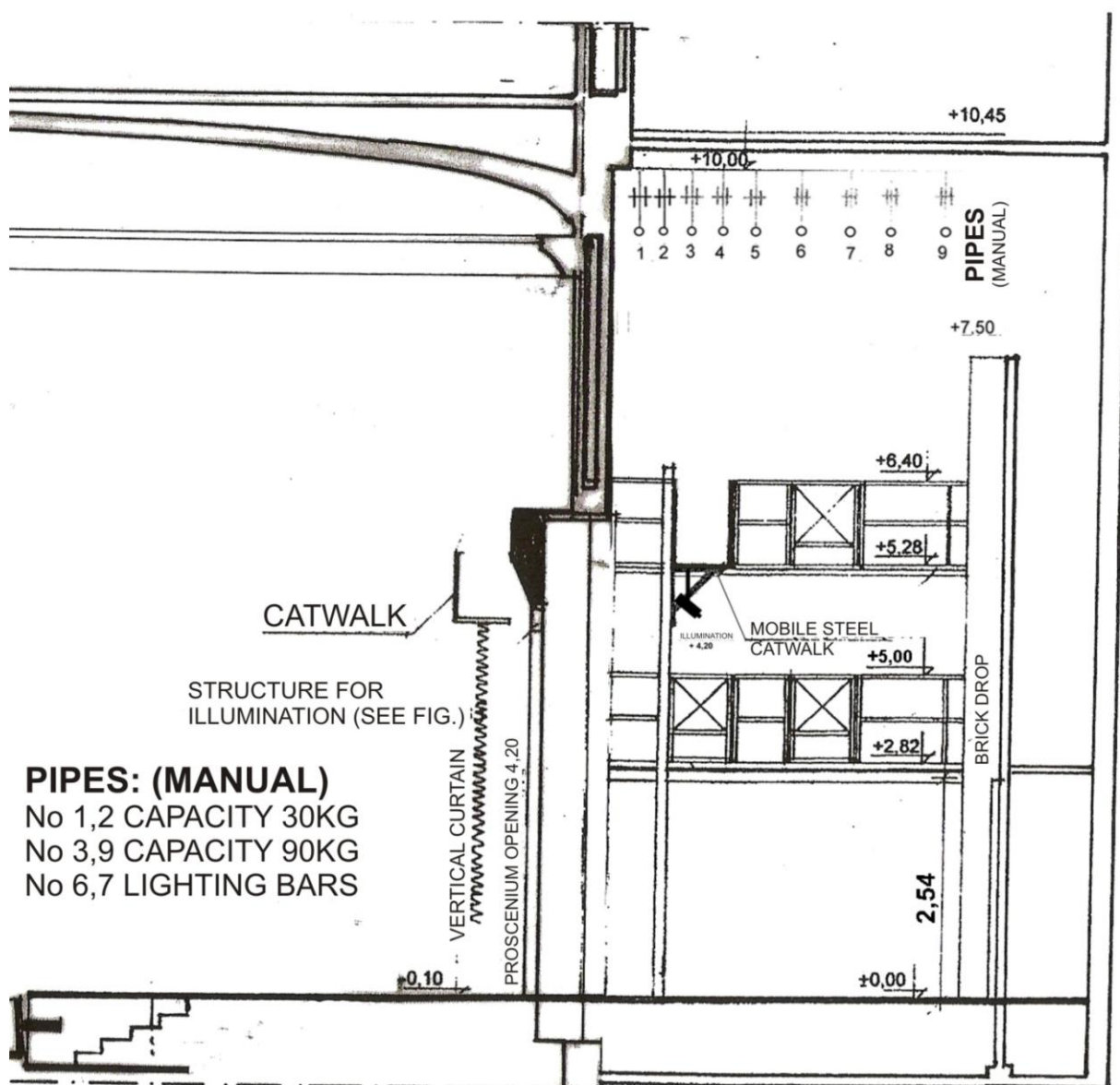
31 - 121 KRAKÓW

TEL. 12 633 48 22

[groteska@groteska.pl](mailto:groteska@groteska.pl)

[www.groteska.pl](http://www.groteska.pl)





MAIN STAGE PROFILE – STAGE BACK-UP PROJECTION



**TEATR LALKI, MASKI I AKTORA GROTESKA**

**ul. SKARBOWA 2**

**31 – 121 KRAKÓW**

**TEL. 12 633 48 22**

**[groteska@groteska.pl](mailto:groteska@groteska.pl)**

**[www.groteska.pl](http://www.groteska.pl)**

