



TEATR LALKI, MASKI I AKTORA GROTESKA

ul. SKARBOWA 2

31 – 121 KRAKÓW

TEL. 12 633 48 22

groteska@groteska.pl

www.groteska.pl

Technical data

The Groteska Theatre - the Domed Stage

The highest placed theatre stage in Krakow

UPDATE 16.01.2012

Stage location: 4 floor

Auditorium: 188 seats, additional seats: 15

Stage area: 70 m²

Proscenium opening: controlled with gates

Depth of stage: 11m

Stage height from the floor to the dome vault: 11.5m

Stage height from the floor to the lighting structure: 4.5m

Diameter of the Domed Hall circle: 17.80 m

Drapes: black

Floor: black, textile BT

Ballet Floor: black/grey 60m² [6m x 10m]

Drop: black/white

Dimentional limitations for stage design components

- 1- Door 2m x 2m
- 2- Door 1.56m x 2.16m
- 3- Component length up to 4,3 m

Restrictions for scenography (ban setting for escape route; picture 6.)

Ladies dressing room: 21 m²

Gentlemen dressing room: 33 m²

Air condition: no

Disabled access: no

Car park: no

Eating place: cafe - 100 m²

[on the ground floor, receptions possible]

Costume rental: no

Passenger lift: no

Service lift: no





TEATR LALKI, MASKI I AKTORA GROTESKA

ul. SKARBOWA 2

31 – 121 KRAKÓW

TEL. 12 633 48 22

groteska@groteska.pl

www.groteska.pl

SALA KOPUŁOWA – WYPOSAŻENIE AKUSTYCZNE

EQUIPMENT - TYPE	NUMBER OF PIECES	NOTES
SOUND SYSTEM		
YAMAHA DM-1000	1	
MACKIE SRM 450 (400W)	2	
MACKIE SWA 1501 (700W)	2	
MACKIE SRM – 350	4	BEHIND THE AUDITORIUM
PAGING		
DYNACORD 300 W	2	BACK OF THE STAGE PERMANENT
SOUND PLAYBACK		
MINIDISC SONY MOS – JE 520	2	
MINIDISC/CD TASCAM CD1 MKII	2	
CD DENON DN –C 635	1	CONSTANS
MICROPHONES		
SHURE SM 58	5	
RDUCH (CONDENSER TYPE)	2	
AUDIOTECHNICA AEW T 5400	6	WIRELESS
AUDIOTECHNICA AEW T 1000	8	MICROPORTS

MULTIMEDIA

EQUIPMENT - TYPE	NUMBER OF PIECES	NOTES
PANASONIC PT-D5500 PROJECTOR	3	THE MULTIMEDIA EQUIPMENT MAY BE USED UPON CONSENT OF THE THEATRE MANAGEMENT
OBJECTIVE XGA (0,8)	3	
OBJECTIVE XGA (1,8 – 2,5)	3	
EDIROL V4 VIDEO MIXER	3	
DVD PIONEER	4	



TEATR LALKI, MASKI I AKTORA GROTESKA

ul. SKARBOWA 2

31 – 121 KRAKÓW

TEL. 12 633 48 22

groteska@groteska.pl

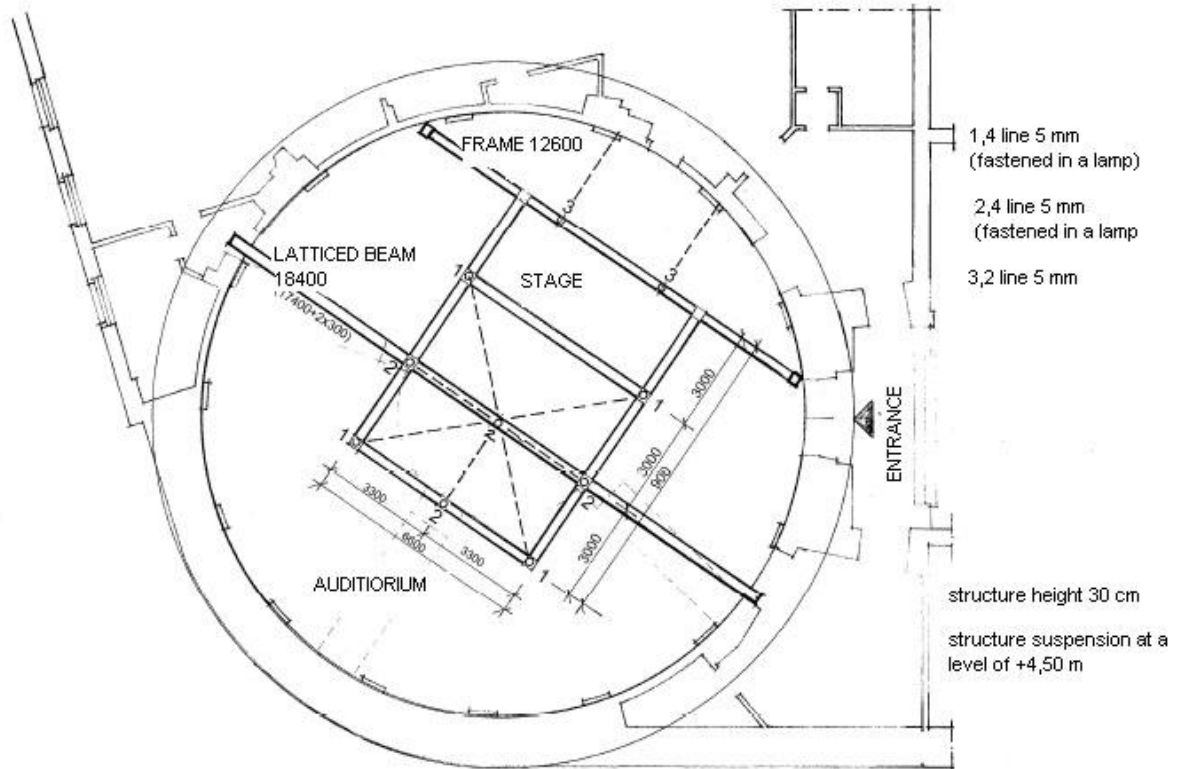
www.groteska.pl

LOOPS + HEADPHONES	20	
--------------------	----	--

THE DOMED STAGE - LIGHTING

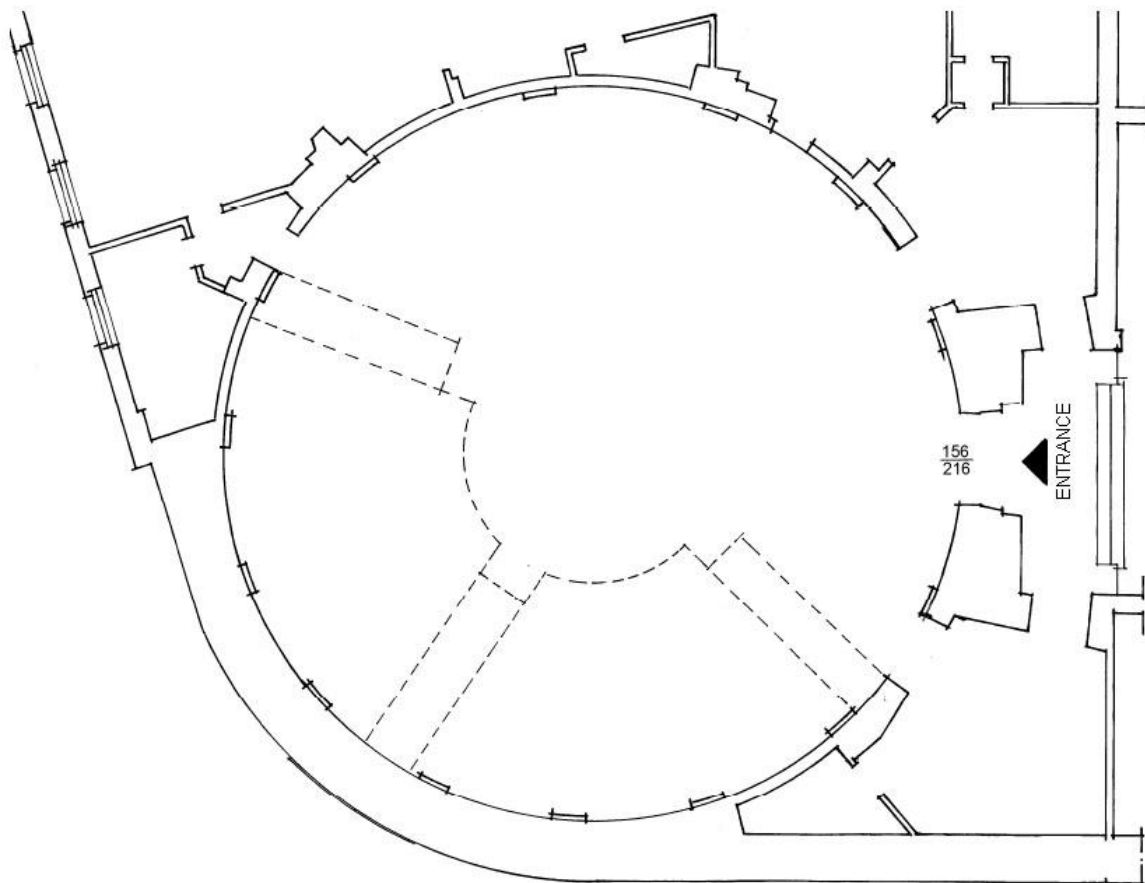
EQUIPMENT - TYPE	NUMBER OF PIECES	NOTES
[INNOWATOR 24/48] MIXER TABLE	1	99 CIRQUITS 2500W PER CHANNEL, DIGITAL CONTROL
ADB PC 1000W	10	
SPOTLIGHT 1000W	8	
ETC 750W V PROFIL	4	
ETC 575W PROFIL	6	
RV. 650 W	6	
DDR 1000W	6	
ADB 650 PROFIL	12	
PAR 64	8	
PAR 54	2	
FLOOD LIGHT 1000W	8	DROPS
ULTRALITE PICO 300W	4	
STANDS WITH A CROSSBAR	3	
STANDS	5	
THEATRE SMOKE MACHINE	1	

PICTURE 1.



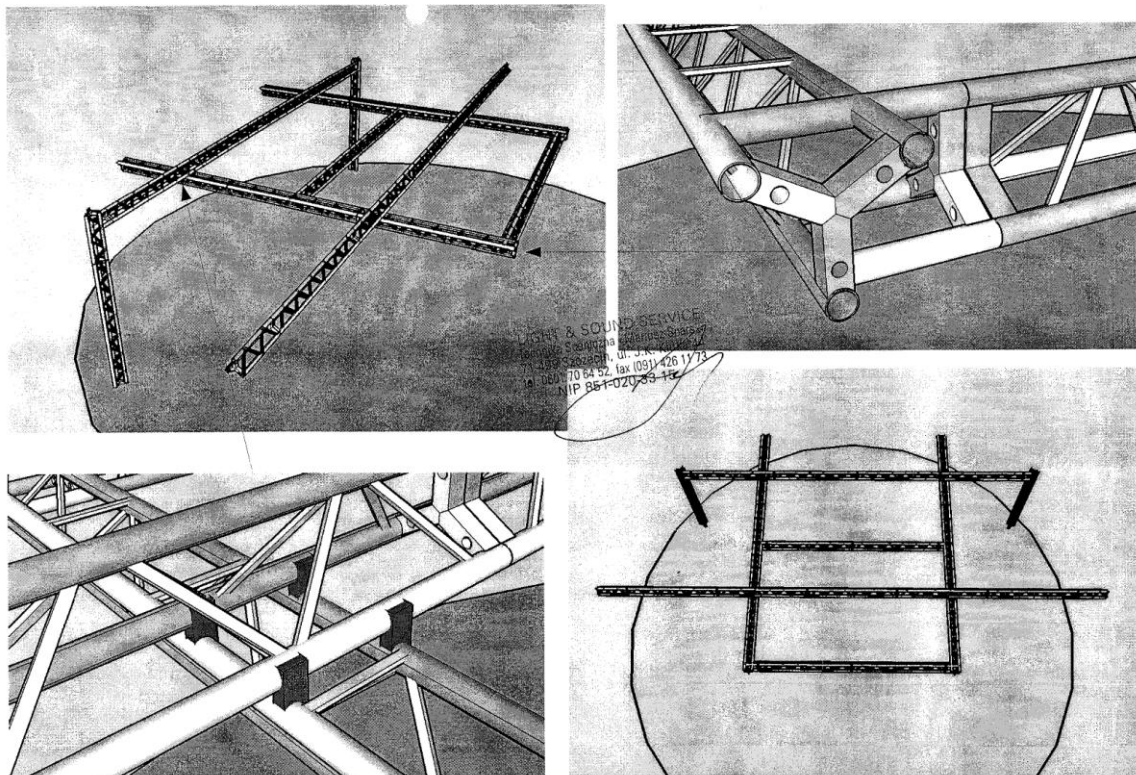
THE DOMED STAGE - FRAMEWORK STRUCTURE

PICTURE 2.



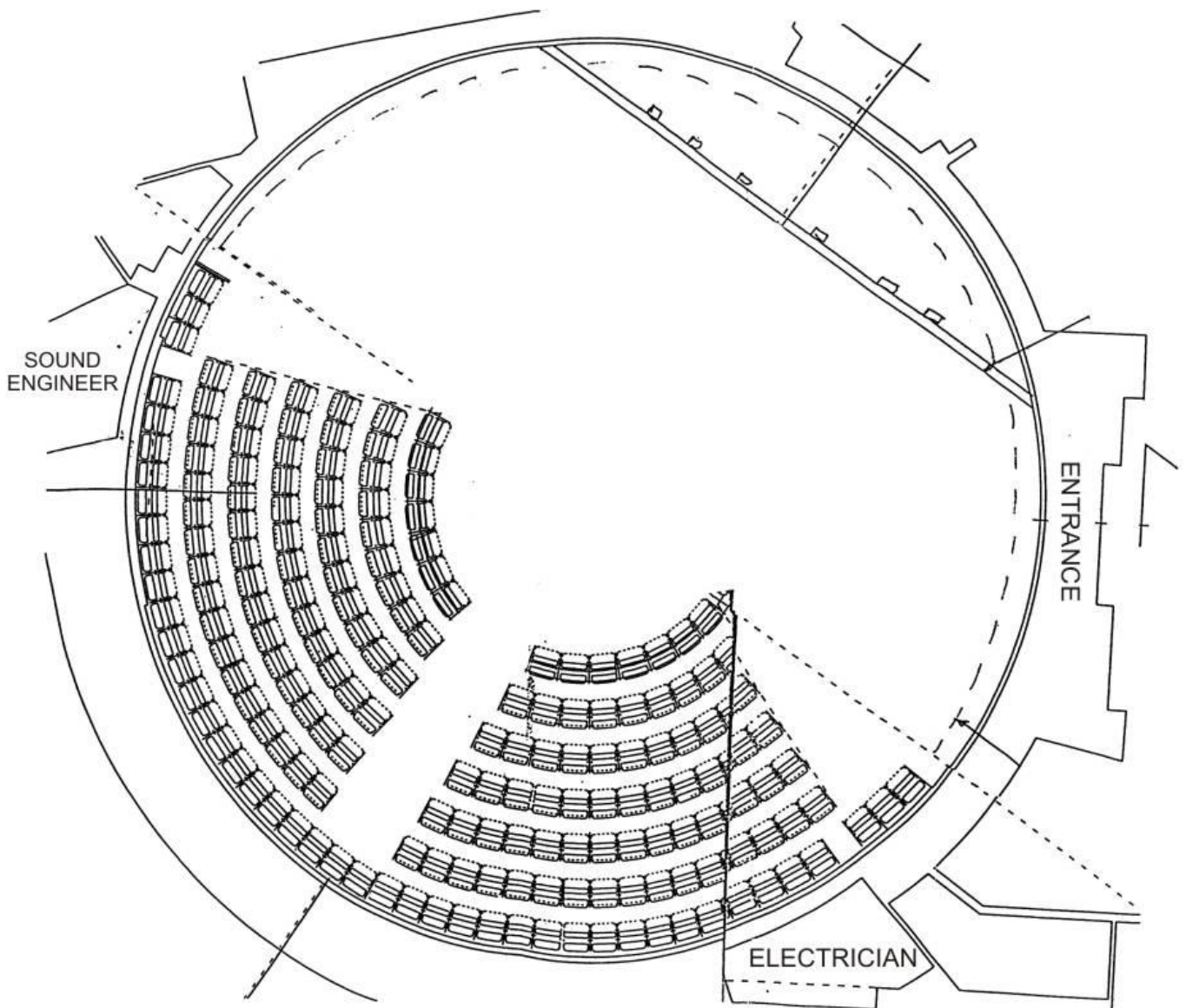
THE DOMED STAGE – HORIZONTAL PROJECTION

PICTURE 3.



THE DOMED STAGE – FRAMEWORK STRUCTURE VISUALIZATION

PICTURE 4.



THE DOMED STAGE – SEAT PLAN



TEATR LALKI, MASKI I AKTORA GROTESKA

ul. SKARBOWA 2

31 – 121 KRAKÓW

TEL. 12 633 48 22

groteska@groteska.pl

www.groteska.pl

PICTURE 5.





TEATR LALKI, MASKI I AKTORA GROTESKA

ul. SKARBOWA 2

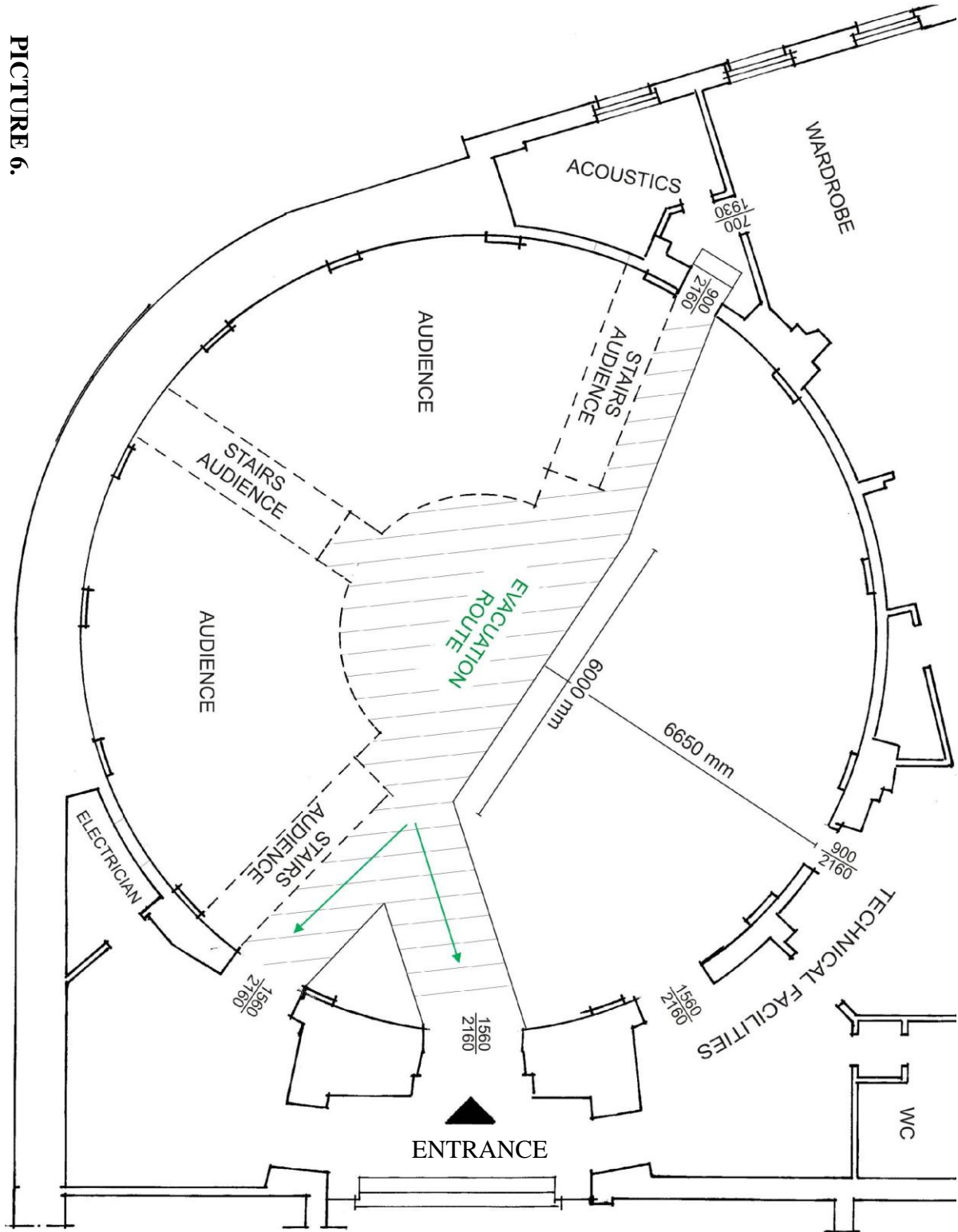
31 - 121 KRAKÓW

TEL. 12 633 48 22

groteska@groteska.pl

www.groteska.pl

PICTURE 6.





TEATR LALKI, MASKI I AKTORA GROTESKA

ul. SKARBOWA 2

31 - 121 KRAKÓW

TEL. 12 633 48 22

groteska@groteska.pl

www.groteska.pl

PICTURE 8.

THE DOMED STAGE - FRAMEWORK STRUCTURE

